

Viewtech High Quality IP CCTV

# Dahuatech 8CH & 16CH NVR

8CH or 16CH 1080P Recording, 8 port PoE Switch Built in.

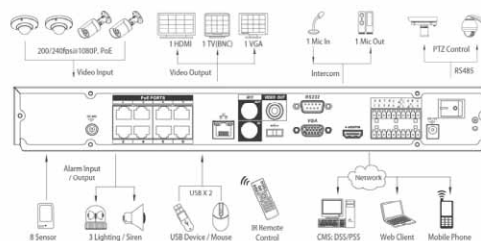
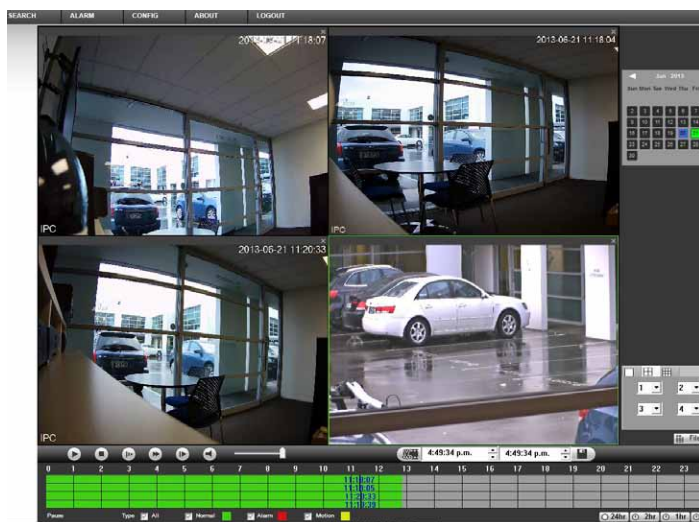


## Features

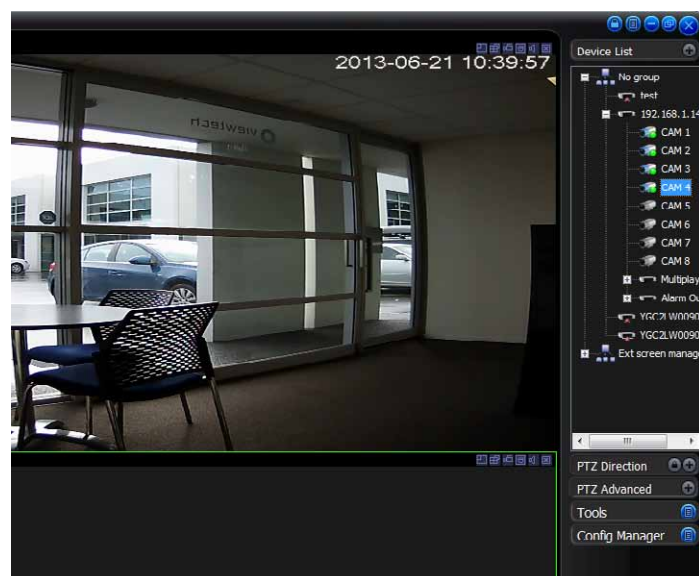
- 1/3" 2Megapixel progressive scan Exmor CMOS
- Up to 8CH or 16CH Recording with real time 1080p live view
- H.264/MJPEG dual codec decoding
- Up to 5Mp resolution
- Max 240fps@1080p, 480fps@720p, 960ps@D1 preview & recording
- HDMI / VGA simultaneous video output
- Easily managed from any web browser or control directly via mouse & HDMI monitor
- 8 channel synchronous realtime playback, GRID interface
- Support Multi-brand network cameras: Dahua, Arecont Vision, AXIS, Bosch, Brickcom, Canon, CP Plus, Dynacolor, Honeywell, Panasonic, Pelco, Samsung, Sanyo, Sony, Videosec, Vivotech plus many others
- ONVIF Version 2.0 conformance
- 3D intelligent positioning with Dahua PTZ camera
- 8 PoE ports, Plug&Play
- Support 2 SATA HDDs up to 8TB, 2 USB2.0
- Multiple network monitoring: Web viewer, CMS(DSS/PSS) & DMSS

Note: 16CH Model will require additional PoE switch.

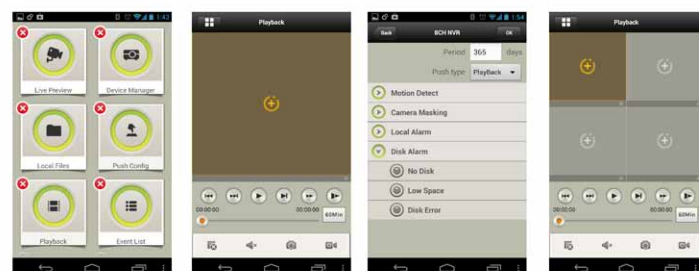
## Web Based Management



## PSS Client Software



## Mobile Phone App Screen Shots



## Technical Specifications

Model	DH-NVR5208-P	DH-NVR5216-P	DH-NVR5232-P
<b>System</b>			
Main Processor	Dual-core embedded processor		
Operating System	Embedded LINUX		
<b>Video &amp; Audio</b>			
IP Camera Input	8 channel	16 channel	32 channel
Two-way Talk	1 channel Input, 1 channel Output, BNC		
<b>Display</b>			
Interface	1 HDMI, 1 VGA, 1 TV		
Resolution	1920×1080, 1280×1024, 1280×720, 1024×768		
Display Split	1/4/8/9	1/4/8/9/16	1/4/8/9/16/25/32
OSD	Camera title, Time, Video loss, Camera lock, Motion detection, Recording		
<b>Recording</b>			
Compression	H.264 / MJPEG		
Resolution	5MP(2560×1920) / 3MP(2048×1536) / 1080P(1920×1080) / 720P(1280×720) / D1 (704×576/704×480)		
Record Rate	Max 240fps@1080p, 480fps@720p, 960ps@D1		
Bit Rate	48~ 8192kbps		
Record Mode	Manual, Schedule(Regular(Continuous), MD, Alarm), Stop		
Record Interval	1~120 min (default: 60 min), Pre-record: 1~30 sec, Post-record: 10~300 sec		
<b>Video Detection &amp; Alarm</b>			
Trigger Events	Recording, PTZ, Tour, Alarm, Video Push, Email, FTP, Buzzer & Screen tips		
Video Detection	Motion Detection, MD Zones: 396(22×18), Video Loss & Camera Blank		
Alarm Input	8 channel	8 channel	8 channel
Relay Output	3 channel		
<b>Playback &amp; Backup</b>			
Sync Playback	1/4/8	1/4/8/16	1/4/8/16
Search Mode	Time/Date, Alarm, MD & Exact search (accurate to second), Smart search		
Playback Function	Play, Pause, Stop, Rewind, Fast play, Slow play, Next file, Previous file, Next camera, Previous camera, Full screen, Repeat, Shuffle, Backup selection, Digital zoom		
Backup Mode	USB Device / Network		
<b>Network</b>			
Ethernet	RJ-45 port (10/100M/1000M)		
Network Function	HTTP, TCP/IP, IPv4/IPv6, UPNP, RTSP, UDP, SMTP, NTP, DHCP, DNS, IP Filter, PPPOE, DDNS, FTP, Alarm Server, IP Search(Support Dahua IP camera, DVR, NVS and etc.)		
Max. User Access	20 users		
Smart Phone	iPhone, iPad, Android, Windows Phone		
<b>Storage</b>			
Internal HDD	2 SATA ports		
<b>Auxiliary Interface</b>			
USB	2 ports (1 Rear), USB2.0		
RS232	1 port, For PC communication & Keyboard		
RS485	1 port, For PTZ control		
<b>General</b>			
Power Supply	NVR: DC12V PoE Port: DC48V		
Power Consumption	NVR: 20W(without HDD) PoE Port: Max. 15(each)		
Working Environment	-10 ~+55°C / 10~90%RH / 86~106kpa		
Dimension (W×D×H)	1U, 375mm × 285mm × 50mm		
Weight	2.3KG(without HDD)		

Distributed in NZ by



www.viewtech.co.nz, 0800 888 324

Manufactured by

