

## AXIS Camera Companion

The easiest way to network video surveillance.



- > HDTV image quality
- > Easy to install and use
- > No central PC or DVR needed
- > Remote access to video
- > Apps for iPhone, iPad and Android
- > Scalable and future-proof

AXIS Camera Companion is the market's easiest video surveillance solution for small systems from 1 to 16 cameras – perfect for retail, offices and hotels. With AXIS Camera Companion, all video is recorded on SD cards in the cameras, and no DVR or server is necessary – making each camera a smart, independent video recording device. The system consists of standard Axis cameras, SD cards, software clients for PC and smartphones, and standard network equipment.

AXIS Camera Companion offers HDTV quality for reliable identification of people and incidents. Video clips or snapshots can be easily exported. Internet access is easy to set up, and with support for apps for iPhone, iPad and Android, AXIS Camera Companion lets the user view video at any time, from anywhere.

AXIS Camera Companion removes the single point of failure which is common in alternative solutions where a DVR failure prevents all cameras from being recorded. The cameras in an AXIS Camera Companion system record video regardless of the network status.

The free PC client is only needed during installation. For viewing live or recorded video, or exporting video after an incident, either the client or a smartphone app can be used.

AXIS Camera Companion is a scalable and future-proof network video solution that protects the customer's investment. Adding new cameras to the system is easy, and existing analog cameras can be integrated using Axis video encoders. If the user wants to step up to another IP solution in the future, the Axis cameras and encoders can be reused, as well as the network equipment.

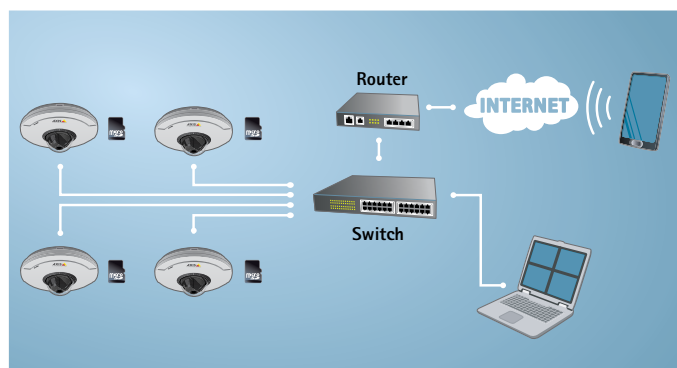


## Technical Specifications – AXIS Camera Companion

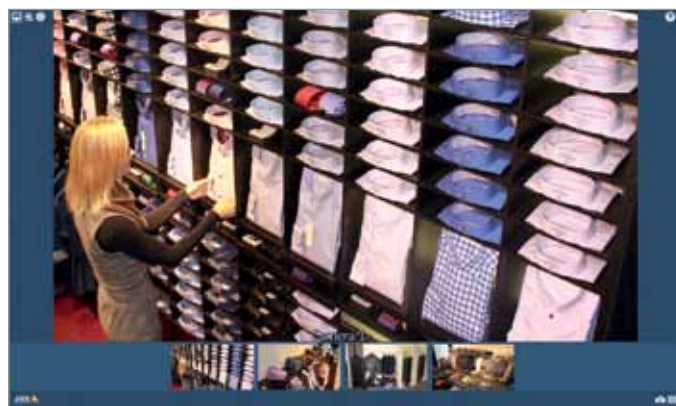
General	
<b>PC client</b>	Download from: <a href="http://www.axis.com/companion">www.axis.com/companion</a>
<b>Mobile access</b>	Apps for Android devices, iPhone and iPad (Available from third-party vendor)
<b>Number of channels</b>	1 to 16 cameras
<b>Compatible products</b>	Axis network cameras and encoders with firmware 5.40 or later
<b>Language</b>	English, UK English, Arabic, Brazilian Portuguese, Czech, Dutch, Finnish, French, German, Italian, Japanese, Korean, Polish, Russian, Simplified Chinese, Traditional Chinese, Slovak, Spanish, Swedish and Turkish
Video	
<b>Video compression</b>	H.264 (MPEG-4 Part 10/AVC)
<b>Resolutions</b>	Supports all camera resolutions
<b>Frame rate</b>	Supports all camera frame rates
<b>Audio</b>	One-way audio streaming, AAC audio compression
Storage	
<b>Storage media</b>	SD card, speed class 4 or higher recommended, refer to camera/encoder documentation for specification Storage option: Network-Attached Storage (NAS)
<b>Storage capacity</b>	With AXIS Camera Companion default settings: more than a month of video with 64 GB SD card Configurable retention recording, duration can be limited per camera to conform to local legal requirements

More information is available at [www.axis.com](http://www.axis.com)

### System setup example

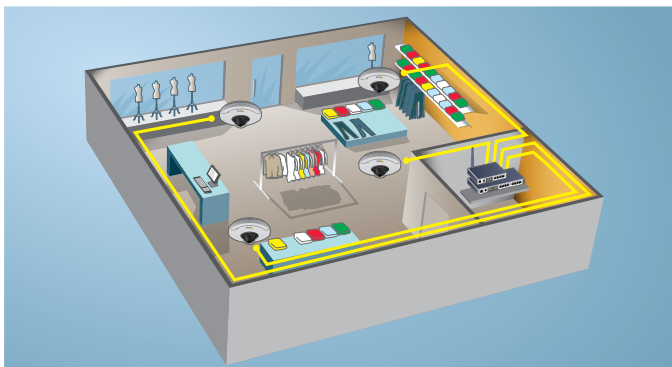


### Live view example



System	
<b>Minimum client computer requirements</b>	OS: Windows XP SP3 (Windows 7 recommended), CPU: Intel Atom 1.6 GHz (Intel i5 recommended), RAM: 1 GB (2 GB recommended), Graphics card: 256 MB onboard video memory recommended. Always use the latest graphics card driver
<b>Recommended network</b>	100 Megabit
<b>Required equipment</b>	Power over Ethernet switch, Ethernet cables, PC, SD cards and/or NAS. For remote and/or wireless access a router with UPnP is also required.
<b>Security</b>	Multiple user access levels with password protection
Live view	
<b>Camera live view</b>	Live view of up to 16 cameras 1, 4, 9 and 16-split views and full screen, panoramic view, multi-view streaming, Axis Corridor Format, camera sequence, digital zoom
<b>PTZ</b>	Control of PTZ cameras using mouse or joystick
Playback	
<b>Search for recordings</b>	Search for recordings based on camera, date and time. Timeline visualization
<b>Playback</b>	Playback speed: up to 8x or frame by frame
<b>Export</b>	Single images in JPEG or video sequences in ASF Installation-free standalone player included, Digital signature on exported recordings
Recording control	
<b>Motion detection</b>	Advanced camera-based motion detection for low bandwidth utilization
<b>Continuous and scheduled recording</b>	Schedule per camera allows continuous recording or customization of weekday and weekend recordings

### Installation example: retail shop



### Recording view example

