



ALNET Ultra High Performance NVR / Hybrid DVR

Supporting Analogue, IP & MegaPixel Cameras



Analogue / IP



Analogue



VGA / HDMI



IP & MegaPixel

Innovative and Intuitive Graphical User Interface
Advanced video search engine - including "smartsearch"
Full high definition live viewing, playback and remote viewing
Analogue, Hybrid, or NVR operation
IP and Megapixel camera support – all major manufacturers.
European software design and development

The ALNET Recorder

ALNET's globally recognized IP surveillance packages give you a powerful recording and viewing interface, taking full advantage of the crystal clear images offered up by today's IP and megapixel cameras. Not only can you view on site, but remote internet access is seamless and can even be done from your PDA or mobile phone.

Rapid and easy search of the video archive database is accomplished by simply hovering your mouse over the video time line bar or by the more advanced "smartsearch". The images are presented to you in full high resolution and digital zoom is at the click of a mouse in playback or live mode.

A robust hardware platform is paramount when dealing with large data throughput such as generated by megapixel devices so performance components are utilized to deal with the heavy loads. Intel's quad core CPU platform results in the capability to record multiple megapixel data streams, while displaying high quality images from twenty-four cameras in full high def (1080P) all the while maintaining high responsiveness to the user. Dust filters, cooling fans, and system monitoring means Alnet will run continuously in all but the harshest of environments.

The range available is:

HYBRID DVRs

Alnet DVR PRO 8 Analogue - 1TB
Alnet Hybrid DVR PRO 8 Analogue/4IP - 1TB
Alnet Hybrid DVR PRO 8 Analogue/8IP - 1TB
Alnet DVR PRO 16 Analogue - 1TB
Alnet Hybrid DVR PRO 16 Analogue/4IP - 1TB
Alnet Hybrid DVR PRO 16 Analogue/8IP - 1TB

NVRs

Alnet NVR PRO 4 IP Cameras - 1TB
Alnet NVR PRO 8 IP Cameras - 1TB
Alnet NVR PRO 12 IP Cameras - 1TB
Alnet NVR PRO 16 IP Cameras - 1TB
Alnet NVR PRO 24 IP Cameras - 1TB

ALNET Unit Features

- Up to 16 Analogue/8 IP hybrid DVR system.
- Up to 24 IP cameras and 64 audio channels in one NetStation license.
- High definition video output (XVGA/HDMI).
- Advanced video search engine - including smartsearch, advanced sliding search bar, calendar, time/date
- Zoom in live and playback mode – virtual PTZ on high res images (Drag image with mouse)
- PDA and Mobile phone remote viewing – support for Windows mobile, SymbianOS, Iphone, Blackberry, Smartphone, SonyErickson
- Professional video client software – support for Windows XP/Vista
- Unlimited number of remote client connections.
- Non-proprietary solution
- Support for all major IP camera manufacturers.
- Support for Megapixel IP Cameras.
- High Image resolutions CIF, 2CIF, 4CIF, D1, 1.3MP, 2.0MP, 3.1MP, 4MP and 5MP.
- Video Motion Detection.
- PTZ support – all major manufacturers
- Watermarking.
- Email/SMS notification.
- Dynamic IP server.
- Multi DVR/NVR clients (scalability).
- Industrial standard 19" rack mount server based DVR system.
- Intel Core 2 Quad Core based CPU and motherboard – Support for up to 40 Megapixel camera input (global)
- Low maintenance unit with industrial standard cooling system including high power cooling fans and dust filtering system with removable/washable filters.
- Temperature sensors monitoring CPU, chipset and server case.
- Front indicators of case and chipset temperature sensors.
- DVD Reader/Writer.
- Front panel USB connections.
- Lockable front doors.
- Includes 1TB Hard drive storage upgradable to 8TB.

Back-up Options

DVD Writer / USB Memory Stick & HDD / Network Archive

- DVD writer built into the server
- USB memory Stick
- USB external Hard Disk Drive
- Via network client software

Network Set-up

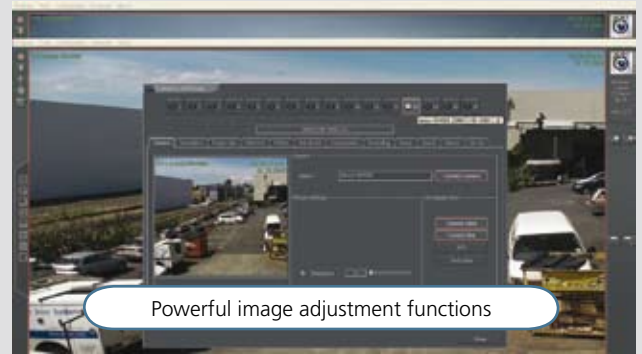
Full high definition live viewing, recording/playback with crystal clear image



Screenshots



Moving the mouse over the timeline



Powerful image adjustment functions



Easy image capture and export



Easy PTZ control of Analogue and IP PTZs

Specifications

IP Camera input:	4, 8, 12, 16 or 24
Hybrid Camera inputs:	8An/4IP, 8An/8IP, 16An/4IP or 16An/8IP
IP Image Size:	VGA, 1.3MP, 2MP, 3MP, 4MP or 5MP
IP Camera Frame Rate:	Limited to only Processor/Network
Analogue Camera Inputs:	8 or 16
Analogue Camera Frame Rate:	100fps
Analogue Image Size:	PAL 768x576, 768x288, 384x288
Display Frame Rate:	Up to 25fps per channel
Screen Split:	1, 4, 7, 9, 13, 16, or 24
Compression Type:	MPEG-4 or MJPG
Data Back-up:	CD/RW, DVD/RW, USB
Processor:	Intel Core 2 Quad Processor
Storage:	1TB expandable to 2TB or 5TB
Monitor Outputs:	VGA x1 or HDMI x1
Network:	1x 1GB Ethernet
Operating System:	Windows® Server
Client Supported Platforms:	Windows XP/Vista, Windows Mobile, SymbianOS, SmartPhone
USB:	Front and back panels



ATLAS GENTECH
DATA | COMMUNICATIONS | SECURITY

Distributed by:
Atlas Gentech (NZ) Limited
Data | Communications | Security
Freephone 0800 732 637
Auckland | Wellington | Christchurch

Available from: